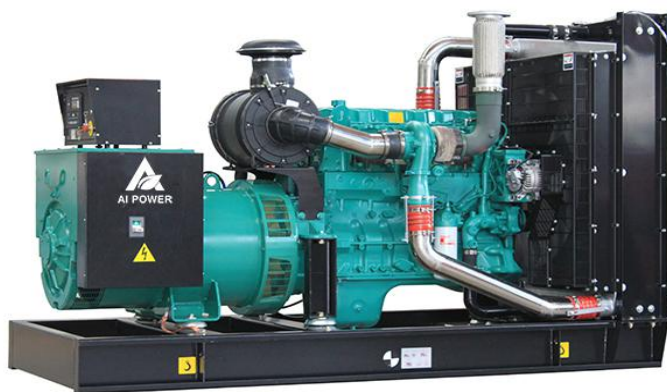


Power By Cummins

Model:AC500



Output Ratings

Generator set model	Voltage	Hz	Phase	P.F.	Prime Power		Standby Power	
	(V)				KVA	KW	KVA	KW
AC500	230/400	50	3	0.8	450	360	500	400

•220/380V,240/415V,254/440V is available

Dimension & weight

Generator set model	Type	L*W*H(mm)	Weight(kg)
AC500	Open	3100*1400*2100	3500
	Silent	3900*1700*2200	4300

Other datas

Circuit Breaker capacity(A)	800
Battery Brand	Varta
Base Fuel Tank Capacity(L)	857

Notes:

- Standby power: Continuous running at variable load for duration of an emergency. No overload is permitted on these ratings. In accordance with ISO 3046 .
- Prime power: Continuous running at variable load for unlimited periods with 10% overload available for 1 hour in any 12 hour period. In accordance with ISO 8528,ISO 3046.
- Standard reference conditions 25°C (77°F) Air Inlet Temp, 100m(328 ft) A.S.L. 30% relative humidity.

Warranty

- The standard warranty period: One year after ex-work or 1000 operation hours whichever come first shall apply.
- Consumable parts(air filter, fuel filter, lube oil filter) , All failures and damages due to the mal-operation, neglect of maintenance and operation not according to the operation manual, are out of the scope of warranty.

Standard Configuration

- Engine include air,fuel,oil filters, starting motor and charge alternator etc.
- Brushless AC alternator,single bearing, flange connection, w/AVR
- Radiator with engine driven fan mounted on skid
- Channel steel base frame, <550KW base 8hrs mounted fuel tank as standard
- Anti-vibration pads between engine/alternator and base frame
- Circuit breaker 3P as standard, 4P optional
- Auto control panel
- Start battery w/ connecting cable and floating battery charger
- Flexbile pipe, exhaust elbow, industrial silencer etc.
- Standard tools kit
- Electric drawing, test report ,operation & maintaince manual of generator etc.
- Optional soundproof/Container canopy, ATS cabinet, remote control panel, synchronization panel, movable trailers, heat exchanger, remote horizontal water tank system, external fuel tank, etc



Manufacturer reserves the right to make changes in model, technical specifications, color, equipment and accessories without prior notice.

Xiamen AI Power Technology Co., Ltd.

Add: No.12 East Haijing Road, Xiamen Area of Pilot Free Trade Zone of China.

Tel: +86-592-6031835 | Email: sales@aipowergen.com | www.aipowergen.com

Engine

GENERAL ENGINE DATA

Engine manufacturer		Dongfeng Cummins Engine Co. Ltd
Engine brand		Cummins
Engine model		QSZ13-G5
Engine speed (rpm)		1500
Engine output(kWm)		
	Standby Power	629
	Prime Power	550
	Continuous Power	495
No. of Cylinder		6
Aspiration		Turbocharged and Charge Air Cooled
Borer * Stroke (mm)		130*163
Displacment (litre)		13
Compression Ratio		17:01
Engine Idle Speed (rpm)		700-850

FUEL SYSTEM

Type Injection System	BYC P7100/Electronic Governor		
Fuel Consumption (litre/hour)			
	100% prime power	107.1	
	75% prime power	80.3	
	50% prime power	55.5	
	25% prime power	32.7	

EXHAUST SYSTEM

Maximum Back Pressure (kPa)	10		
Exhaust Gas Temperature (standby/prime power) (°C)	523/485		
Exhaust Gas Flow(standby/prime power) (kg/min.)	36.3/34.1		

AIR INDUCTION SYSTEM

Maximum Intake Air Restriction (kPa)		
	with Dirty Filter Element	6.2
	with Clean Filter Element	3.7
Intake Air Flow (standby/prime power) (m³/min.)		29.5/27.8

LUBRICATION SYSTEM

Oil Pressure (kPa)		
	Idle Speed	83
	Governed Speed	207-276
Maximum Oil Temperature (°C)		125
Oil Capacity with OP2180 Oil Pan: Low-High		61.2-75.3

COOLING SYSTEM

Coolant Capacity — Engine Only (liter)	23.1		
Standard Thermostat Modulating Range (°C)	82-94		
Maxi. Top Tank Temp. for Standby/Prime Power (°C)	102/102		

ELECTRICAL SYSTEM

Cranking Motor (Heavy Duty, Positive Engagement) (volt)	24		
Maximum starting circuit resistance	0.002 Ohm		
Minimum Recommended Battery Capacity			
cold soak at 0 to 10 deg C (32 to 50 deg F) (0°F CCA)	1250		

Xiamen AI Power Technology Co., Ltd.

Add: No.12 East Haijing Road, Xiamen Area of Pilot Free Trade Zone of China.

Tel: +86-592-6031835 | Email: sales@aipowergen.com | www.aipowergen.com

ALTERNATOR

Alternator manufacturer	Cummins Generator Technologies(China) Co. Ltd
Alternator brand	Stamford
Alternator model	HCI544C
Control system	Self excited
A.V.R.	Included
Voltage regulation	±1%
Insulation system	Class H
Protection	IP23
Rated power factor	0.8
Winding pitch	Two thirds
Winding leads	12
Frequency (Hz)	50
Voltage (V)	400
Phase	3
Output ratings (kVA/kW)	
-----Cont.H-40°C	500/400
-----Standby-27°C	520/416
THF	<2%
TIF	<50
Max. overspeed (Rev/Min)	2250
Bearing	Single

CONTROL SYSTEM



The **DEEPSEA DSE 6120** is an Auto Mains (Utility) Failure Control Module developed to provide a wide range of operating and monitoring features for single diesel and gas gen-sets.

DSE7320, ComAp AMF25 etc. for option.

Protection function:

- Low oil Pressure
- High water temperature
- High voltage and low voltage
- Over current
- Overspeed
- Volt adjuster and frequency adjuster.
- Emergency stop
- Low fuel alarm and shutdown
- Low coolant alarm and shutdown

Key Functions:

- Multiple display languages
- Data logging facility
- Fully configurable via PC using USB communication
- Front panel configuration
- 3 phase generator sensing
- 3 phase mains (utility) sensing
- Generator/load power monitoring (kW, kV A, kV Ar, pf)
- Accumulated power monitoring (kW h, kVA h, kVAr h)
- Generator/load current monitoring and protection
- Generator overload protection (kW)
- Breaker control via fascia buttons
- Fuel and start outputs, configurable when using CAN
- 4 configurable DC outputs
- 4 configurable analogue/digital inputs
- Support for 0 to10 V & 4 to 20 mA oil pressure sensors
- 6 configurable digital inputs
- Configurable staged loading outputs
- CAN, MPU and alternator speed sensing in one variant
- 3 engine maintenance alarms
- Engine hours counter
- Engine pre-heat
- Engine run-time scheduler
- Engine idle control for starting & stopping
- Fuel pump control
- Battery voltage monitoring
- Start on low battery voltage
- Configurable remote start input
- 1 alternative configuration
- Comprehensive warning, electrical trip or shutdown protection.
- LCD and LED alarm indication

Xiamen AI Power Technology Co., Ltd.

Add: No.12 East Haijing Road, Xiamen Area of Pilot Free Trade Zone of China.

Tel: +86-592-6031835 | Email: sales@aipowergen.com | www.aipowergen.com

SILENT CANOPY



- ① Durable stainless steel hinges
- ② Durable stainless steel hinges
- ③ Strong base fuel tank
- ④ High performance exhaust silencer
- ⑤ Deepsea control system
- ⑥ Emergency stop
- ⑦ High quality 3P Circuit breaker and terminal output
- ⑧ Fresh air inlet cooling system

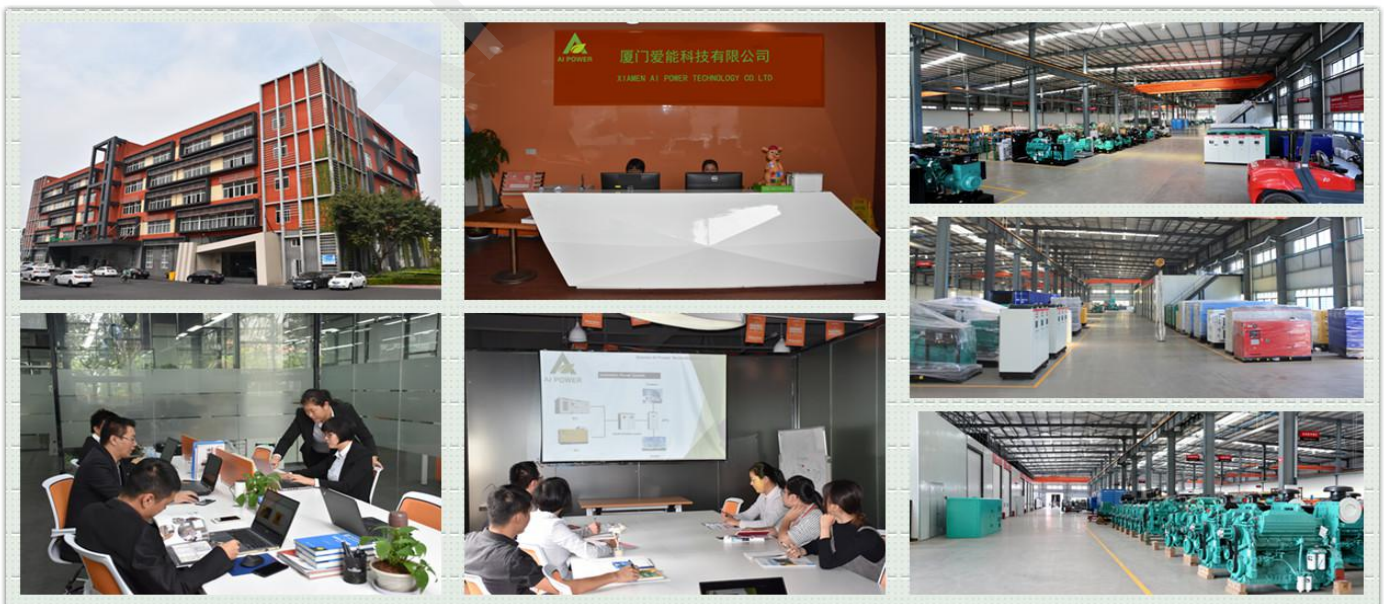


- ① air inlet cooling system
- ② stainless door lock
- ③ fuel cap lock
- ④ tow holes
- ⑤ engine
- ⑥ radiator
- ⑦ insulation and soundproof materials
- ⑧ maintenance door

Performance Features:

- More than 2mm thick steel to make the canopy.
- High quality paint materials and strict powder paint processing.
- large-scale impedance combined type silencer effectively reduce noise of the generator.
- Stainless steel door locks and hinges and 180° revolvable and disassemble door for easy maintenance.
- High quality soundproof and insulation materials could efficiently reduce noise.
- Transparent viewing window make the control panel clear at a glance.
- Lifting earis mounted in the base frame for easy pull.
- From 10kva to 700kva we use normal silent canopy, more than 700kva we are using containerized canopy.
- ISO standard 20', 40' and 40HQ sea container canopy for options.
- Standard sea container canopy is easier for shipping.

AI POWER COMPANY SHOW



Xiamen AI Power Technology Co., Ltd.

Add: No.12 East Haijing Road, Xiamen Area of Pilot Free Trade Zone of China.

Tel: +86-592-6031835 | Email: sales@aipowergen.com | www.aipowergen.com