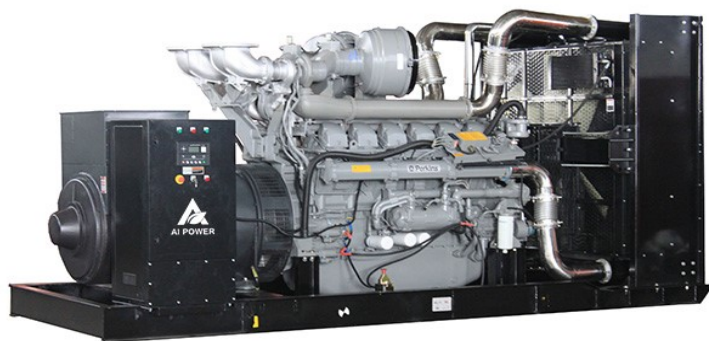


Power By Perkins

Model:AP1650



Output Ratings

Generator set model	Voltage	Hz	Phase	P.F.	Prime Power		Standby Power	
	(V)				KVA	KW	KVA	KW
AP1650	230/400	50	3	0.8	1500	1200	1650	1320

•220/380V, 240/415V, 254/440V is available

Dimension & weight

Generator set model	Type	L*W*H(mm)	Weight(kg)
AP1650	Open	5100*2100*2400	10800
	Silent	5800*2430*2650	12750

Other datas

Circuit Breaker capacity (A)	2500
Battery brand	Varta
Base Fuel Tank Capacity(L)	N/A

Notes:

- Standby power: Continuous running at variable load for duration of an emergency. No overload is permitted on these ratings. In accordance with ISO 3046 .
- Prime power: Continuous running at variable load for unlimited periods with 10% overload available for 1 hour in any 12 hour period. In accordance with ISO 8528,ISO 3046.
- Standard reference conditions 25°C (77°F) Air Inlet Temp, 100m(328 ft) A.S.L. 30% relative humidity.

Warranty

- The standard warranty period: One year after ex-work or 1000 operation hours whichever come first shall apply.
- Consumable parts(air filter, fuel filter, lube oil filter) , All failures and damages due to the mal-operation, neglect of maintenance and operation not according to the operation manual, are out of the scope of warranty.

Standard Configuration

- Engine include air,fuel,oil filters, starting motor and charge alternator etc.
- Brushless AC alternator,single bearing, flange connection, w/AVR
- Radiator with engine driven fan mounted on skid
- Channel steel base frame, <550KW base 8hrs mounted fuel tank as standard
- Anti-vibration pads between engine/alternator and base frame
- Circuit breaker 3P as standard, 4P optional
- Auto control panel
- Start battery w/ connecting cable and floating battery charger
- Flexible pipe, exhaust elbow, industrial silencer etc.
- Standard tools kit
- Electric drawing, test report ,operation & maintaince manual of generator etc.
- Optional soundproof/Container canopy, ATS cabinet, remote control panel, synchronization panel, movable trailers, heat exchanger, remote horizontal water tank system, external fuel tank, etc



Manufacturer reserves the right to make changes in model, technical specifications, color, equipment and accessories without prior notice.

Xiamen AI Power Technology Co., Ltd.

Add: No.12 East Haijing Road, Xiamen Area of Pilot Free Trade Zone of China

Tel: +86-592-6031835 | Email: sales@aipowergen.com | www.aipowergen.com

Engine

GENERAL ENGINE DATA

Engine manufacture	Perkins Engines Company Limited		
Engine brand	Perkins		
Engine model	4012-46TAG2A		
Engine speed (rpm)	1500		
	Baseload power	Prime power	Standby power
Gross engine power (kWb)	1069	1331	1459
Typical Genset electrical output 0.8pf 25°C (100 kPa) (KW)	976	1225	1346
Cylinders	12-cylinder, 60° Vee		
Cycle	4 stroke		
Induction system	Turbocharged		
Combustion system	Direct injection		
Compression ratio	13:01		
Bore * Stroke (mm)	160 * 190		
Cubic capacity (Litre)	45.842		

FUEL SYSTEM

Injection system	Direct		
Governor type	electronic		
Fuel Consumption (litre/hour)			
	Standby	341	
	Prime	310	
	Baseload	249	
	75% output power	234	
	50% output power	157	

COOLING SYSTEM

Total coolant capacity: Jacket Water (Litres)		
	engine only	73
	Temperate cooling (engine and radiator)	207
	Tropical cooling (engine and radiator)	210
Thermostat operating range (°C)		71-85
Shutdown switch setting (°C)		101

LUBRICATION SYSTEM

Total system capacity (liter)	177		
Maximum sump capacity (liter)	157.5		
Minimum sump capacity (liter)	115		
Oil temperature at normal operating conditions (°C)	105		
Oil pressure at rated speed (kPa)	400		
Oil pressure Minimum @80°C (kPa)	340		
Shutdown switch - pressure setting (kPa)	193 (falling)		

INDUCTION SYSTEM

Maximum air intake restriction of engine (kPa)		
	Clean filter	2
	Dirty filter	4
Combustion air flow(standby/prime power) (m³/min)		128 / 120

EXHAUST SYSTEM

Back pressure for total system (kPa)	5		
Exhaust gas temp. after turbo(standby/prime power)(°C)	455		
Exhaust gas flow (standby/prime power) (m ³ /min)	320		

ELECTRICAL SYSTEM

Alternator voltage (volts)	24		
Alternator output (amps)	55		
Stater motor type (volts)	24		
Starter motor power (kw)	8.2		

Xiamen AI Power Technology Co., Ltd.

Add: No.12 East Haijing Road, Xiamen Area of Pilot Free Trade Zone of China

Tel: +86-592-6031835 | Email: sales@aipowergen.com | www.aipowergen.com

ALTERNATOR

Alternator manufacturer	Cummins Generator Technologies(China) Co. Ltd
Alternator brand	Stamford
Alternator model	PI734C
Control system	PMG
A.V.R.	Included
Voltage regulation	±1%
Insulation system	Class H
Protection	IP23
Rated power factor	0.8
Winding pitch	Two thirds
Winding leads	6
Frequency (Hz)	50
Voltage (V)	400
Phase	3
Output ratings (kVA/kW)	
-----Cont.H-40°C	1550/1240
-----Standby-27°C	1660/1328
THF	<2%
TIF	<50
Max. overspeed (Rev/Min)	2250
Bearing	Single

CONTROL SYSTEM



The **DEEPSEA DSE 6120** is an Auto Mains (Utility) Failure Control Module developed to provide a wide range of operating and monitoring features for single diesel and gas gen-sets.

DSE7320, ComAp AMF25 etc. for option.

Protection function:

- Low oil Pressure
- High water temperature
- High voltage and low voltage
- Over current
- Overspeed
- Volt adjuster and frequency adjuster.
- Emergency stop
- Low fuel alarm and shutdown
- Low coolant alarm and shutdown

Key Functions:

- Multiple display languages
- Data logging facility
- Fully configurable via PC using USB communication
- Front panel configuration
- 3 phase generator sensing
- 3 phase mains (utility) sensing
- Generator/load power monitoring (kW, kV A, kV Ar, pf)
- Accumulated power monitoring (kW h, kVA h, kVAr h)
- Generator/load current monitoring and protection
- Generator overload protection (kW)
- Breaker control via fascia buttons
- Fuel and start outputs, configurable when using CAN
- 4 configurable DC outputs
- 4 configurable analogue/digital inputs
- Support for 0 to10 V & 4 to 20 mA oil pressure sensors
- 6 configurable digital inputs
- Configurable staged loading outputs
- CAN, MPU and alternator speed sensing in one variant
- 3 engine maintenance alarms
- Engine hours counter
- Engine pre-heat
- Engine run-time scheduler
- Engine idle control for starting & stopping
- Fuel pump control
- Battery voltage monitoring
- Start on low battery voltage
- Configurable remote start input
- 1 alternative configuration
- Comprehensive warning, electrical trip or shutdown protection.
- LCD and LED alarm indication

Xiamen AI Power Technology Co., Ltd.

Add: No.12 East Haijing Road, Xiamen Area of Pilot Free Trade Zone of China

Tel: +86-592-6031835 | Email: sales@aipowergen.com | www.aipowergen.com

SILENT CANOPY



- ① Durable stainless steel hinges
- ② Durable stainless steel hinges
- ③ Strong base fuel tank
- ④ High performance exhaust silencer
- ⑤ Deepsea control system
- ⑥ Emergency stop
- ⑦ High quality 3P Circuit breaker and terminal output
- ⑧ Fresh air inlet cooling system

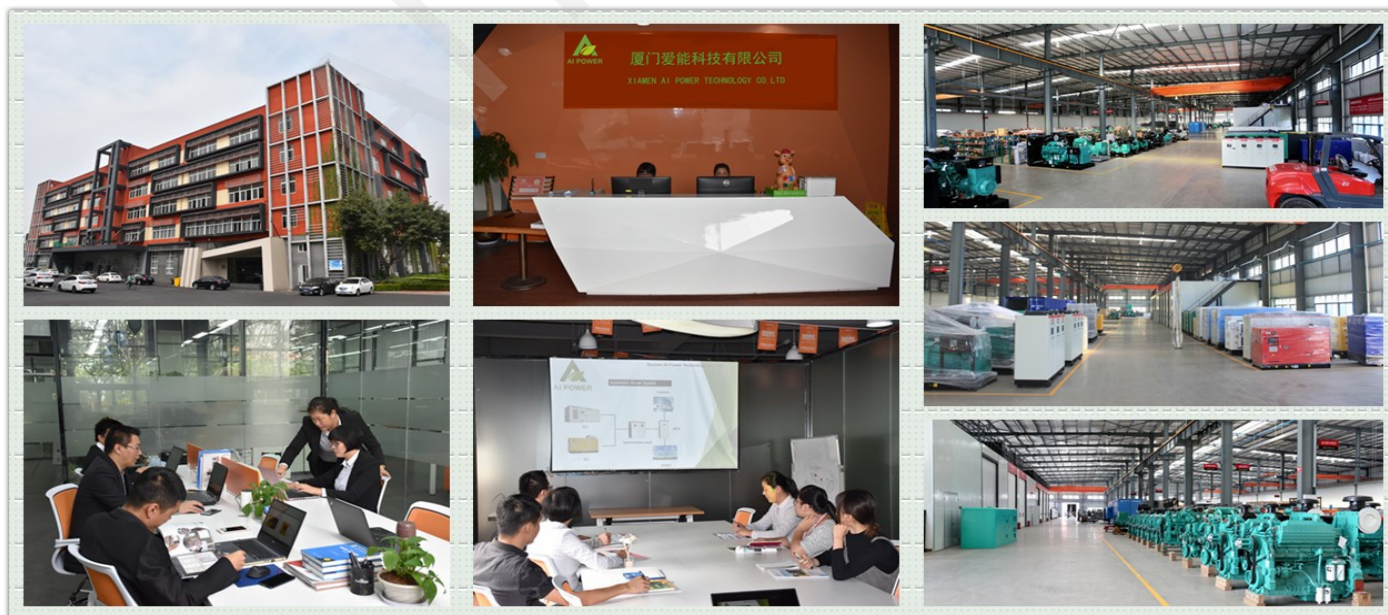


- ① air inlet cooling system
- ② stainless door lock
- ③ fuel cap lock
- ④ tow holes
- ⑤ engine
- ⑥ radiator
- ⑦ insulation and soundproof materials
- ⑧ maintenance door

Performance Features:

- More than 2mm thick steel to make the canopy.
- High quality paint materials and strict powder paint processing.
- large-scale impedance combined type silencer effectively reduce noise of the generator.
- Stainless steel door locks and hinges and 180° revolvable and disassemble door for easy maintenance.
- High quality soundproof and insulation materials could efficiently reduce noise.
- Transparent viewing window make the control panel clear at a glance.
- Lifting earis mounted in the base frame for easy pull.
- From 10kva to 700kva we use normal silent canopy, more than 700kva we are using containerized canopy.
- ISO standard 20', 40' and 40HQ sea container canopy for options.
- Standard sea container canopy is easier for shipping.

AI POWER COMPANY SHOW



Xiamen AI Power Technology Co., Ltd.

Add: No.12 East Haijing Road, Xiamen Area of Pilot Free Trade Zone of China

Tel: +86-592-6031835 | Email: sales@aipowergen.com | www.aipowergen.com